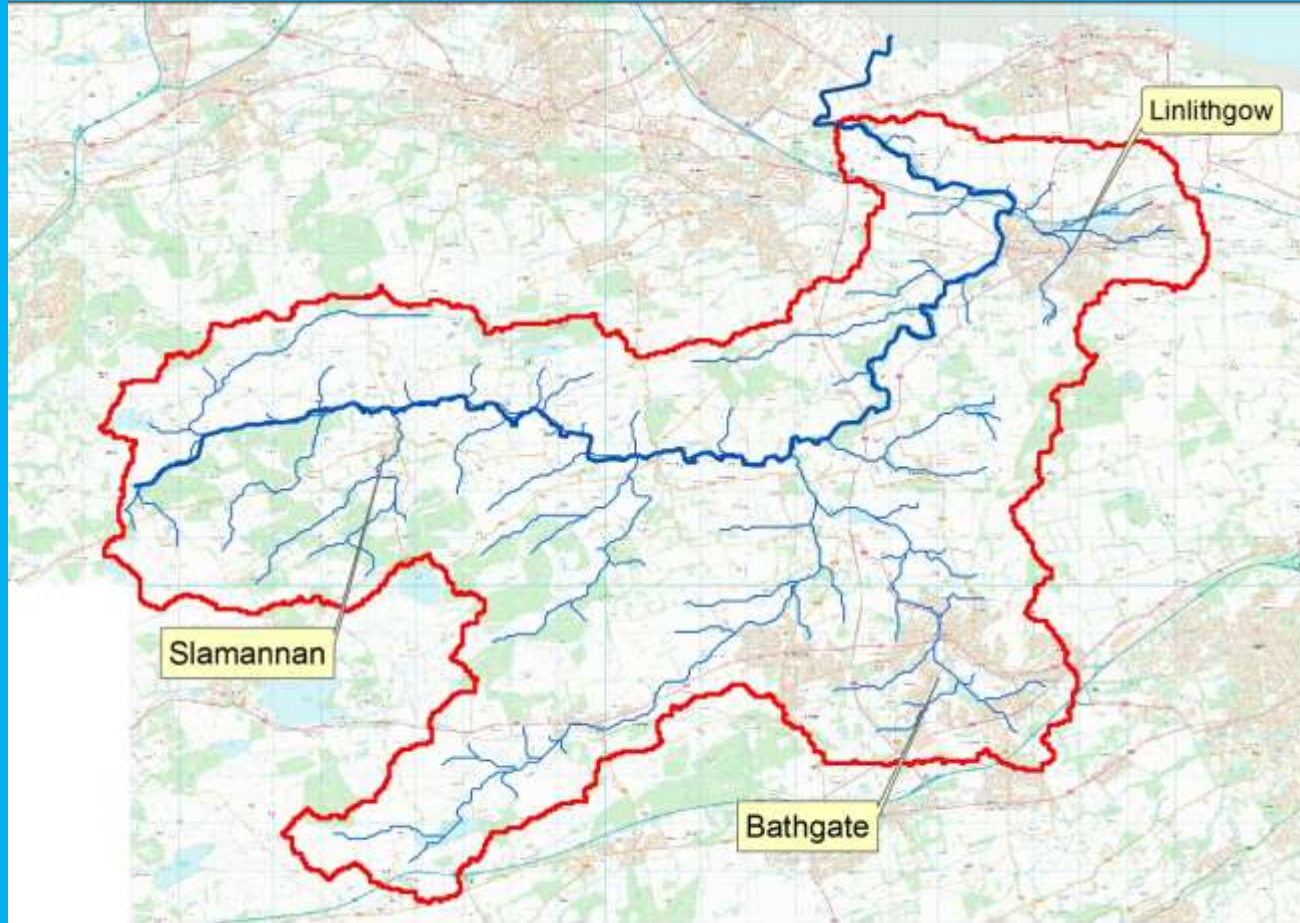


# The History of the River Avon

## Description

The River Avon starts on the Slamannan Plateau where it makes its way through raised bogs and farmland. The River has carved its way through the landscape, meandering down towards the mining towns of Slamannan, Avonbridge and Westfield.

The River then flows through Muiravonside Country Park, passing Linlithgow as it makes its way to Polmont. It then passes through Grangemouth Petrochemical refinery where it finally meets the Forth Estuary.



Whilst industry was booming on the river, it was heavily polluted as industry discharged its waste into the river turning it a dirty orange and sometimes green. This severely impacted on wildlife, especially the iconic Atlantic salmon reducing populations to extinction within the river.

## Historic Impacts

Throughout history, rivers played a major role in where settlements formed. This is no different on the Avon with most settlements on the river itself or its tributaries.

The river was used by many during the industrial revolution as a source of power with in the region of 21 mills constructed along with associated weirs and mill lades, using the water to power industry. Mills produced everything from corn, flour, paper, steel, lint, stone and printing.